

TURKEY SCIENCE AND PRODUCTION CONFERENCE 2019 DELEGATE INFORMATION PACK



Addresses

**Carden Park Hotel and Golf
Resort** Broxton Road, Chester CH3
9DQ, United Kingdom
Tel: +44 1829 731000



<http://www.cardenpark.co.uk/>

Ramada Wrexham

Ellice Way, Wrexham LL13 7YH, United
Kingdom Tel: +44 1978 291400
<http://www.ramada.co.uk/hotels/united-kingdom/wrexham/ramada-plaza-wrexham/hotel-overview>

Holt Lodge

Wrexham Rd Wrexham LL13 9SW, United Kingdom
Tel: +44 1978 661002
www.holtlodge.co.uk/

The Cock O'Barton

Barton Road, Nr Chester, Cheshire, SY14 7HU
Tel: 01829 782 277
www.cobcheshire.com



Macdonald Hill Valley Hotel Golf & Spa

Tarporley Rd, Whitchurch SY13 4HA

Tel +44 1948 660700

<http://www.macdonaldhotels.co.uk/our-hotels/macdonald-hill-valley-spa-hotel-golf/>

LOCAL TAXIS

1 Email:- bryan still

[bryanstravel@outlook.com]



Taxis can be prebooked – cost to the airport is circa £50-55.

NOTE Carden Park is about 1 hour from Manchester Airport. Airport taxis especially black cab taxis may charge excessive fees – beware!!

Taxis can be reserved at Manchester Airport and some companies have special meeting areas. Visit

<https://www.manchesterairport.co.uk/getting-to-and-from/by-taxi/>

For other options - Please enquire at the hotel reception who will be glad to assist.

EVENTS

WEDNESDAY 6th MARCH – Informal meeting at the venue on 6th March from 7pm.

THURSDAY 7th MARCH – RECEPTION IN THE Main Bar AT Carden Park – 7 – 20 PM

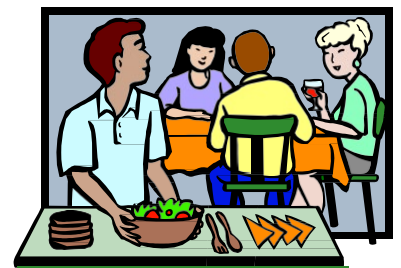
RETURN BUSES – SEE BELOW



DINNER ON 6th MARCH – IMPORTANT!!!!

There is no formal dinner on Wednesday 6th March. To help cater for the numbers of guests in the Restaurant, the hotel will provide delegates with a fixed menu choice of starters, main course and dessert options for a faster service. Other options are available.

To cater for the number of guests, tables must be booked in advance from 7-30 – 9-30pm. **PLEASE BOOK YOUR TABLE AT CHECK IN OR FOR PARTIES BOOK IN ADVANCE.**



The table reservation number is +44 1829 731534 – PLEASE QUOTE TURKEYTIMESCONFERENCE



BANQUET ON 7th MARCH

The banquet is smart attire and not a formal 'black tie'. Wine is provided.

There is no formal seating plan as we want delegates to mix and make new friends. If sponsors want to have a table of 10 guests then they can ask for a reserved sign on a table.



AT THE VENUE – NEW!



- Internet access – there is free internet access codes for delegates to use throughout the hotel – please ask at the hotel reception for information

FIRE ALARM

If there is a fire alarm

**PLEASE LOCATE YOUR NEAREST FIRE
ESCAPE AND FOLLOW THE ROUTE TO
THE ASSEMBLY AREA**



COMPLIMENTARY AIRPORT BUSES

**WEDNESDAY 6th MARCH DEPARTING MANCHESTER
AIRPORT outside Terminal 1 – Lakeside Coaches**

Buses will drop delegates at their hotel - please ensure you have the correct hotel.

Please go to **Terminal 1 information desk** (no 16 see map below) there will be a representative holding a big **Turkey Times board** 15.30 till 21.00. A contact number to contact him direct at the airport will be provided before the conference.

The contact will direct you to the next bus waiting in location D with a maximum waiting time of 15 mins
Follow the signs to Terminal 1 – from Terminal 2 and Terminal 3 you can walk directly through following the signs. Terminal 3 is 5 minutes walk.

Buses cannot wait at the Terminal buildings due to security reasons.

Departure times (est)

**1 – 1710 – 49 seats
2 – 1825 – 62 seats
3 – 1950 – 49 seats
4 – 2100 – minibus –**

There are no reserved seats on the buses.

Buses will depart at the set times. We will try to be flexible but because of the number of flights it is not possible to wait for all flight arrivals.

Times may vary with traffic delays etc

TERMINAL 1 ARRIVALS



KEY

HOTELS	LOCATION
D Bewley's Hotel	Call 0161 489 3090 for pick up
Britannia	Call 0161 489 0808 for pick up
D Crowne Plaza Hotel	Call 0871 942 9055 for pick up
D Etrop Grange Hotel	Call 0161 489 2875 for pick up
D Hilton Hotel	Call 0161 489 3084 for pick up
Holiday Inn	Call 0161 436 4000 for pick up*
Marriott Hotel	Call 0161 436 4000 for pick up*
Premier Inn	Call 0161 436 4000 for pick up*
Radisson Blu Hotel	5 minute walk to hotel (no pick up available) or call 0161 489 5000 to contact hotel
Travelodge	Call 0161 489 0813 for pick up

*A fee applies for this service.

CAR PARKS	LOCATION
B JetParks 1 & 2	Bus Stop B
A JetParks 3	Bus Stop A
A JetParks PLUS	Bus Stop A
B Long Stay - Manchester Airport	Bus Stop B

Accessible Toilet	Meeting Point
Baby Changing	Seating Area
Car park Paystation	Smoking Areas
Cashpoint	Stairs/Escalators
Internet Kiosks	Taxis
Lifts	Toilets

OTHER TRANSPORT	LOCATION
Taxis	
1 Arrow Taxi Private Hire	
2 Trains	The Station
2 Buses	The Station
2 Coaches	The Station
3 Emirates	Chauffeur Desk
3 Etihad	Chauffeur Desk
D Car Rental Village	Bus Stop B

THE SHOPS

4 Arcade Games	9 Spar
5 The Aviation Shop	10 Travelex
6 Boots	11 WHSmith
7 Dry Cleaners	12 Biza
8 Post Office	

FOOD & DRINK

13 Greggs	14 Spud Factory
15 Joes Kitchen	

PASSENGER FACILITIES

16 Information Desk
17 Lost Property & Left Luggage
18 Onward Travel Kiosk
19 Prayer Room

RETURN BUS Friday 8th MARCH – OPEN FOR ALL DELEGATES STRICTLY FIRST COME FIRST SERVED –

There will be 4 buses with approximately 40 seats leaving Carden Park to go to Manchester Airport. Please allow at least 2 hours before your flight. Provisional times are as follows.

1 - 10:30am

2 - 12:10pm

3 - 1:10pm

4 - 2:15pm

This service is free but is **strictly first come first served**.

PROVISIONAL CONNECTING BUS FOR DELEGATES AT RAMADA WREXHAM - HOLT LODGE AND OTHER LOCATIONS

Wed 6th March -

Bus 1 Departure 1630 Carden Park to other hotels

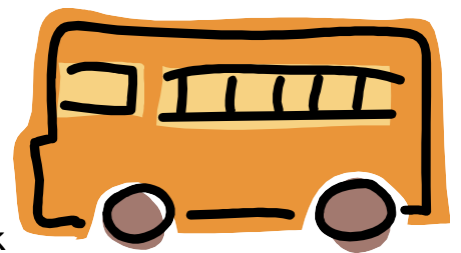
Bus 1 Departure Ramada Wrexham 1830 to Carden Park arrival at 1900

Bus 2 Departure Holt Lodge 1835 to Cock O'Barton departing 1845 to Carden Park arrival at 1900

Bus 1 Departure 2215 to Holt Lodge and Ramada Wrexham

Bus 2 Departure 2215 to Cock O'Barton and Hill Valley

Thurs 7th March -



Bus 1 Departure 0850 Ramada Wrexham to Carden Park

Bus 2 Departure 0850 Holt Lodge to Cock O Barton 09.00 to Carden Park.

Bus 3 Departure 0845 Hill Valley to Carden Park

Bus 1 Departure 1725 Carden Park to Ramada Wrexham

Bus 2 Departure 1725 Carden Park to Cock O Barton to Holt Lodge

Bus 3 Departure 1725 Carden Park to Hill Valley

Bus 1 Departure 1855 Ramada Wrexham to Carden Park

Bus 2 Departure 1900 Holt Lodge to Cock O Barton 1920 to Carden Park.

Bus 3 Departure 1855 Hill valley to Carden Park

Bus 1 Departure 2310 Carden Park to Ramada Wrexham

Bus 2 Departure 2315 Carden Park to Cock O Barton and Holt Lodge

Bus 3 Departure 2320 Carden Park to Hill Valley

Bus 1 Departure 0015 Carden Park to All Hotels

Fri 8th March

Bus 1 Departure 0825 from Ramada Wrexham to Carden Park

Bus 2 Departure 0830 from Holt Lodge Cock o Barton 0840 to Carden Park

Bus 3 Departure 0830 from Hill Valley to Carden Park

CARDEN PARK FAQ'S

Where is Carden Park?

By Road



When using a sat nav enter postcode SY14 7HZ.

Sat Nav Coordinates: Latitude -53.0828 Longitude -2.8188

We are easy to find from the M6.

From the South, join the M54 at junction 10a, then take the A41 towards Chester.

From the North, leave the M6 at junction 20a and follow the M56 and M53 to the A41 for Whitchurch.

At the Broxton roundabout turn towards Wrexham on the A534. We are 1.5 miles on the left

.

How far from Chester / Chester Train Station? - Not far, about 14 Miles

How far from Manchester Airport? Depending on traffic roughly 60 Minutes

How far from Liverpool John Lennon Airport? Depending on traffic approximately 60 Minutes

What is check in time? Your room will be ready for you from 3.00pm

Can I check in earlier? Certainly, just leave your luggage with the concierge and you may use the facilities before your room is ready

What time do I have to check out? We kindly request you vacate your room by 11.00am

When is breakfast served? Between 7.00am – 10.00am

What are the restaurant opening times?

Redmond's Restaurant Dinner: 6.30pm –

10.00pm

Attire: Smart Casual (No trainers or sportswear please)

The Vines opening times 0.00am – 10.00pm – Open for anything from light snacks to a full 3 course menu

Morgan's Bar Bar Snacks are served from 11.00am – 5.00pm

Is Wi Fi & Internet Access Free? Yes it is free throughout the resort

What Spa and Leisure facilities are there?

20 Metre Swimming Pool, Sauna, Jacuzzi, Steam Room, Gymnasium, Relaxation Lounges

Individual Spa Treatments / Day Treatments / Holistic Treatments, Dance Studio

Are there any Outdoor Attractions and Pursuits?

Set in 1000 acres on the Cheshire / Welsh Border we have all of the following for you:

Jogging / Walking Trail

Golf Courses – Two 18 Hole Championship Courses; Nicklaus Course, Cheshire Course

Driving Range

Do you have Disabled Rooms?

Yes including room 106 which has a walk in shower

